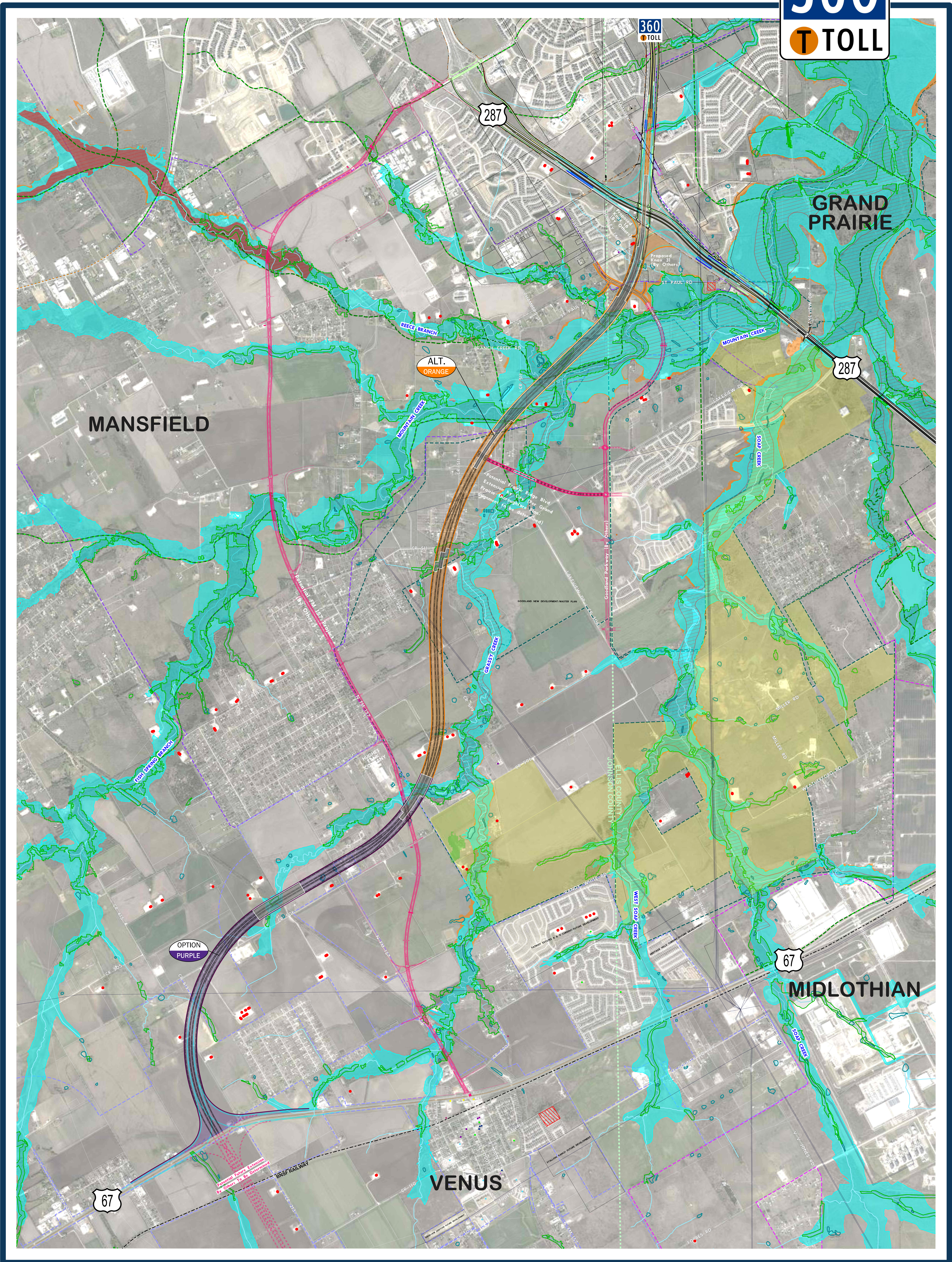


Short-Listed **ALTERNATIVE ORANGE** - **OPTION PURPLE** Combination
 April 16, 2026

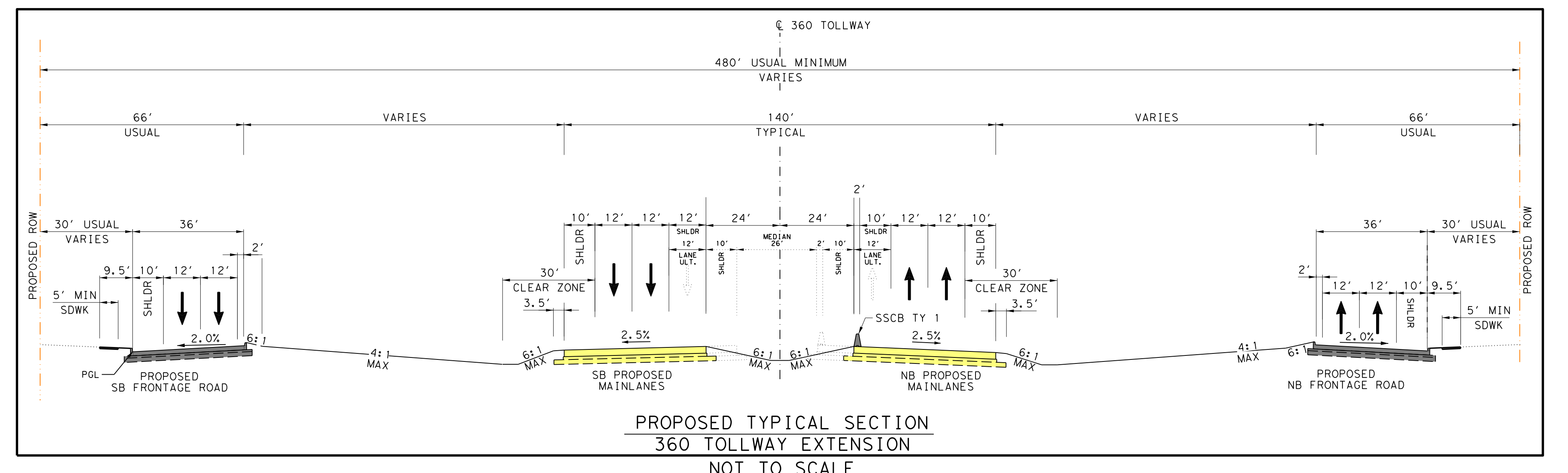


0 500 1000
 SCALE IN FEET



LEGEND

- PROPERTY LINE (APPROXIMATE)
- CITY LIMITS (APPROXIMATE) - CITY OF GRAND PRAIRIE
- CITY LIMITS (APPROXIMATE) - CITY OF MANSFIELD
- CITY LIMITS (APPROXIMATE) - CITY OF MIDLOTHIAN
- CITY LIMITS (APPROXIMATE) - CITY OF VENUS
- COUNTY LINE (APPROXIMATE)
- RAILROAD
- TRANSMISSION LINES (68, 138 and 345KV)
- CREEKS AND TRIBUTARIES
- PONDS (USGS)
- CEMETERY (THC)
- POTENTIAL OFF-STREET REGIONAL VELOWEB *ALA 2024 PLOT
- POTENTIAL RURAL PAVED SHOULDER REGIONAL VELOWEB
- PLATTED DEVELOPMENT ZONE ** (APPROVED)
- ACTIVE OIL/GAS WELLS
- HISTORICAL MARKER (THC)
- LPSST (TCEQ)
- EDUCATIONAL FACILITIES
- HISTORIC-AGE
- RECREATIONAL FACILITIES
- RIPARIAN ZONE
- 100-YR FLOOD PLAIN
- POTENTIAL WETLANDS
- 500-YR FLOOD PLAIN
- FLOODWAY
- BHWCA (TCEQ)
- PST (TCEQ)
- ASSISTED LIVING FACILITIES
- GOVERNMENT FACILITIES
- PLACE OF WORSHIP



360 TOLLWAY EXTENSION MAIN TRAVEL LANE DESIGN SPEED: 70 mph
 360 TOLLWAY EXTENSION FRONTAGE ROAD DESIGN SPEED: 45 mph

**** Potential roadway construction and land acquisition zone (480ft Usual Minimum Width); specific dimensions to be determined during NTTA's subsequent 360 Tollway Extension Schematic Design, Environmental Analysis, and Public Involvement phase.**

**** Additional planned developments may not be shown. All information provided from publicly available sources regarding planned, zoned, permitted developments below:**
 Source: City of Grand Prairie GIS <https://maps-gpdx.hub.arcgis.com>
 Source: City of Mansfield GIS <https://www.mansfieldtx.gov/398/Maps>
 Source: Johnson County GIS <https://experience.arcgis.com/experience/9d266c065c14033b7c2137c12ae1>
 Source: Ellis County GIS <https://arcg.is/0rqgn>

BUILD ALTERNATIVE ALIGNMENT CONCEPTS ***

ALT. ORANGE **OPTION PURPLE**

**** Potential roadway construction and land acquisition zone (480ft Usual Minimum Width); specific dimensions to be determined during NTTA's future 360 Tollway Extension Schematic Design, Environmental Analysis, and Public Involvement phase.**

NOTES:
 1. Aerial photo source: Texas Natural Resource Information System, 2022 (via Bing Maps).
 2. Each illustrative Alignment is conceptual and Subject To Change.
 3. Existing property line limits are approximate.
 4. Conceptual 66-in locations cross-street and related linkwork are Subject To Change.
 5. US 287, US 67, and FM 157 interchange configurations to be determined in coordination with TxDOT Dallas and Ft. Worth District Offices.

PRELIMINARY
 THIS DRAWING IS A REPRESENTATION OF EXISTING AVAILABLE INFORMATION ONLY. RECOMMENDED SOLUTIONS AND DEPICTIONS ARE PRELIMINARY CONCEPTS AND SUBJECT TO CHANGE. NOT FOR BID, CONSTRUCTION OR REPRODUCTION.