



# CTP WIDENING PROJECT

August 2025



## FM 1187 to US 67

NTTA is widening the mainlanes of the Chisholm Trail Parkway (CTP) approximately 13 miles from FM 1187 in Tarrant County to US 67 in Johnson County. This work will include construction of two new mainlanes, allowing for two continuous lanes in each direction, and is expected to be open to traffic in late 2028.

As construction begins, please use caution and observe speed limits and safety signage.

We thank you for your patience as we work to widen the roadway.

### What's Complete?

- In May 2025, the NTTA Board of Directors approved contracts for construction, construction management, and materials testing.

### What's Next?

- Construction signage, environmental protection and temporary barriers will be placed in the work zone.

#### LEGEND

Widening Area



### CTP Widening Quick Facts



**Construction begins:**  
Late 2025



**Ramp closures:**  
Be mindful of any long-term ramp closures.



**Be alert:**  
Watch for roadway workers.



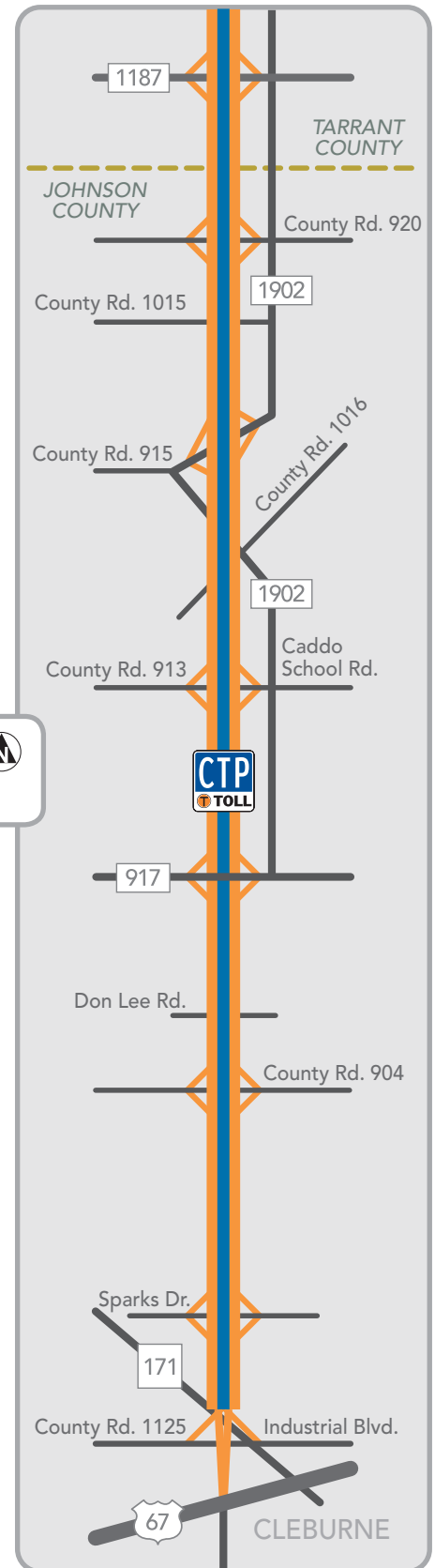
**Completion:**  
Late 2028  
(weather permitting)



Current CTP main lanes in Johnson County



Current CTP main lanes in Johnson County

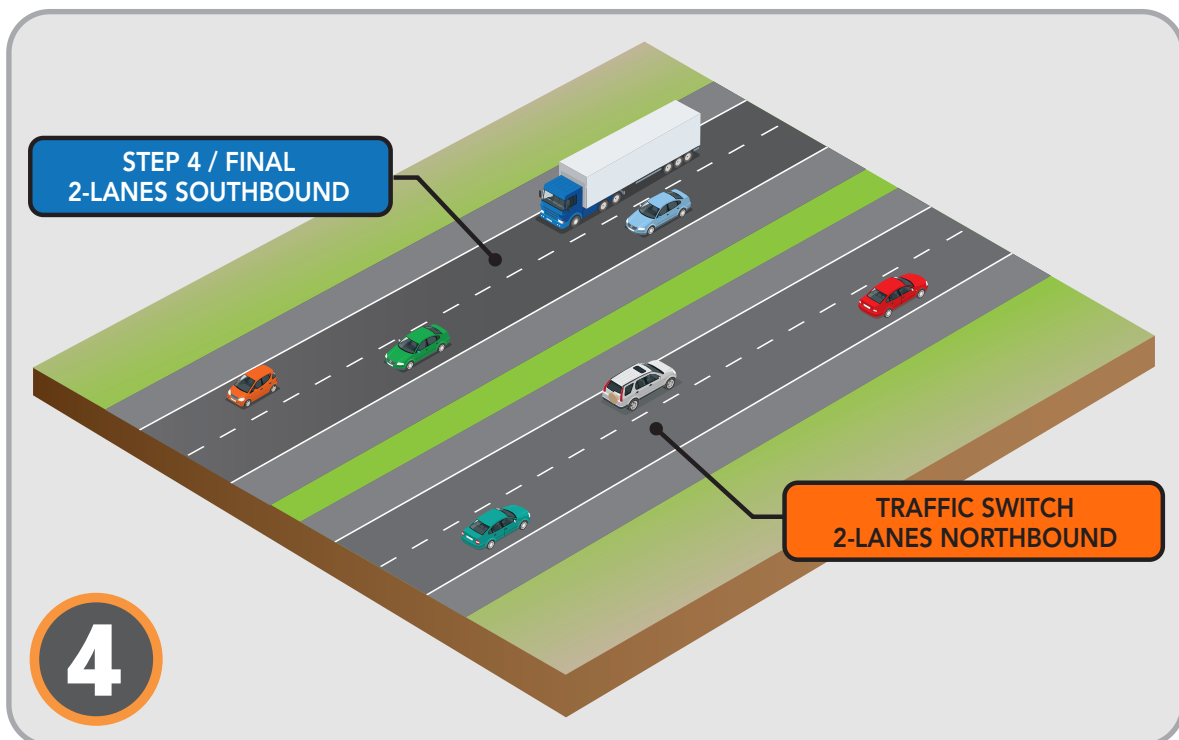
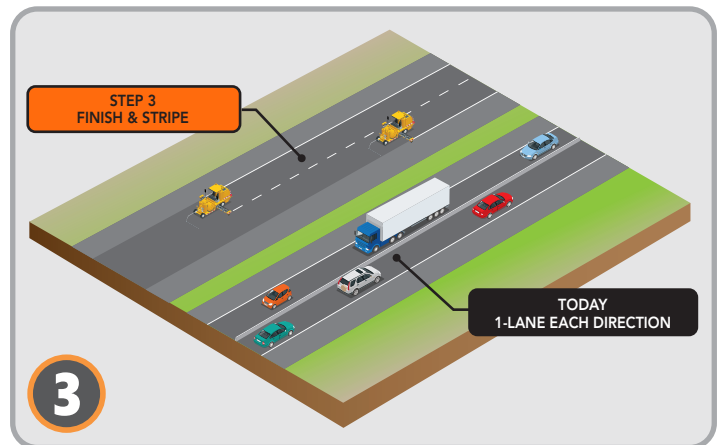
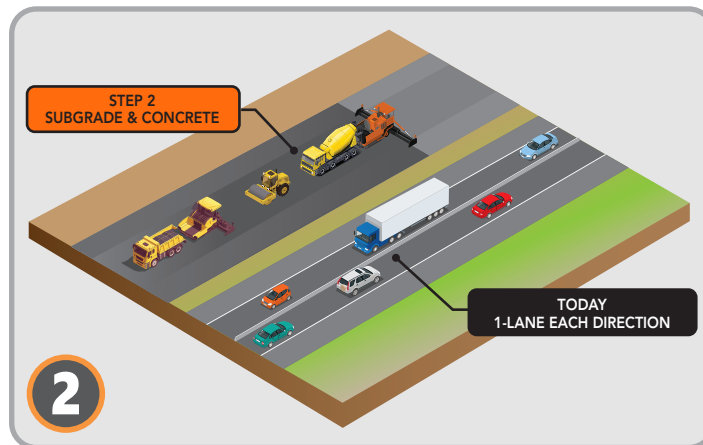
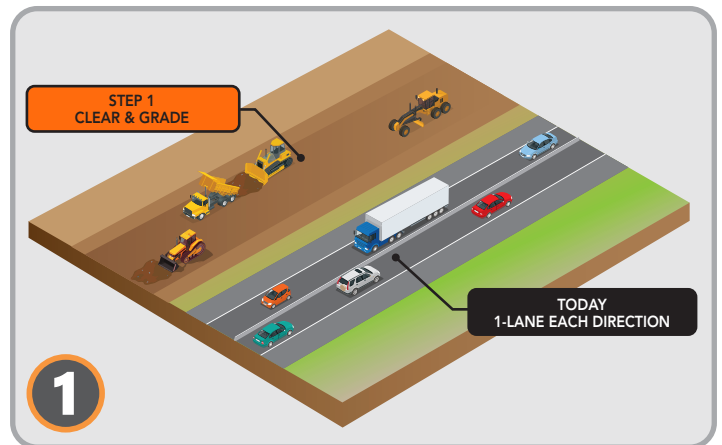
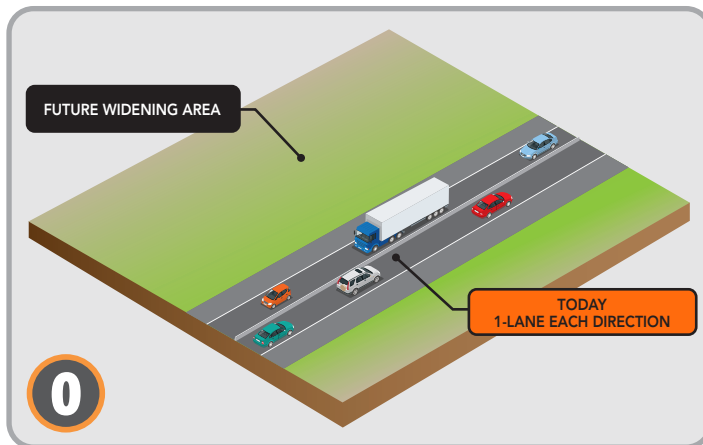


**Have any project-related questions? Let's connect:**

469-608-6880 or [progressNTTA@ntta.org](mailto:progressNTTA@ntta.org)



## Steps to build a wider Chisholm Trail Parkway



Have any project-related questions? Let's connect:

469-608-6880 or [progressNTTA@ntta.org](mailto:progressNTTA@ntta.org)



# President George Bush Turnpike East Branch

AUGUST 2025

The President George Bush Turnpike (PGBT) East Branch project will extend the PGBT south from I-30 to I-20, approximately 11 miles.

The Texas Department of Transportation (TxDOT) began to study this area in 1969 as part of the Dallas County Outer Loop Project.

In 2021, TxDOT transferred this project to NTTA to complete the environmental study and select a route alignment for the future extension.

PROJECT SECTIONS	CURRENT STAGE	SEE PROJECT MAP
I-30 to I-20	In planning	

## RECENT PROGRESS

- NTTA continues the environmental study to select a route alignment and seek environmental clearance.
- A public meeting was held in August 2024 at the Mesquite Convention Center. Comments were collected from the public.

## WHAT'S NEXT?

- A public meeting will be held September 4, 2025 from 5:30 to 7:30 p.m. at the Mesquite Convention Center (1750 Rodeo Dr., Mesquite). Project information will be available for review and public comments will be taken.
- Environmental study and coordination with stakeholders and partners.

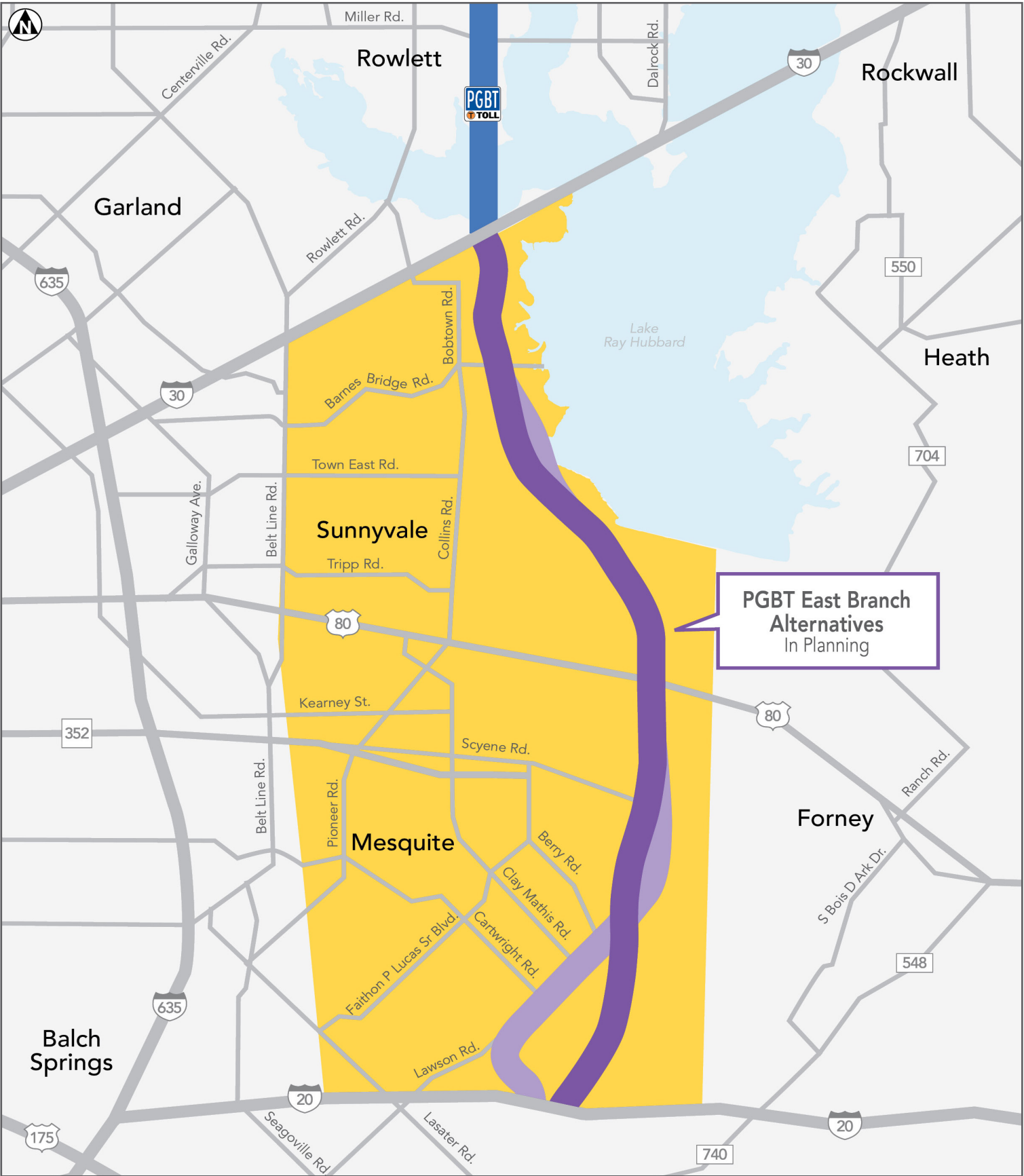
## PROJECT UPDATES IN PICTURES



A public meeting was held in August 2024 in Mesquite



Attendees reviewed map of possible alignment





# Dallas North Tollway Widening Project

JUNE 2025

The Dallas North Tollway (DNT) is being widened between the Sam Rayburn Tollway (SRT) and US 380 to accommodate population growth in the area and improve access to business and entertainment venues.

This project will add an additional lane in each direction and help traffic flow as population growth continues in Collin and Denton counties.

Along with widening the DNT mainlanes, the project team will reconstruct the intersection and DNT bridges over Fields Pkwy. in Frisco.

Opening date: Late 2025

PROJECT SECTIONS	IMPROVEMENTS	SEE PROJECT MAP
SRT to US 380	Addition of a fourth lane in each direction	

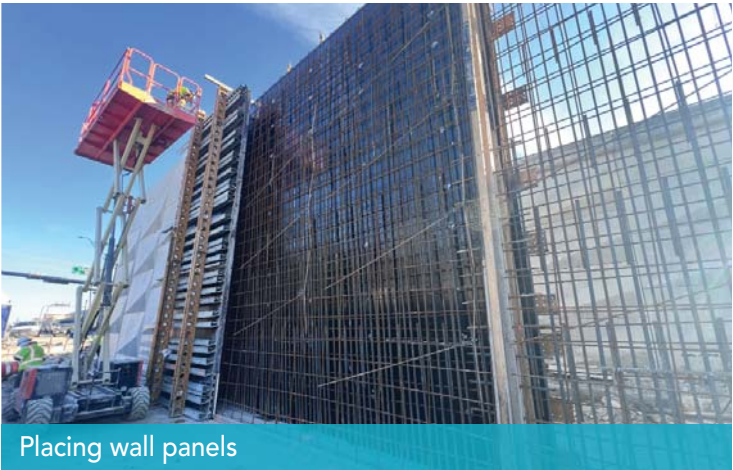
RECENT PROGRESS

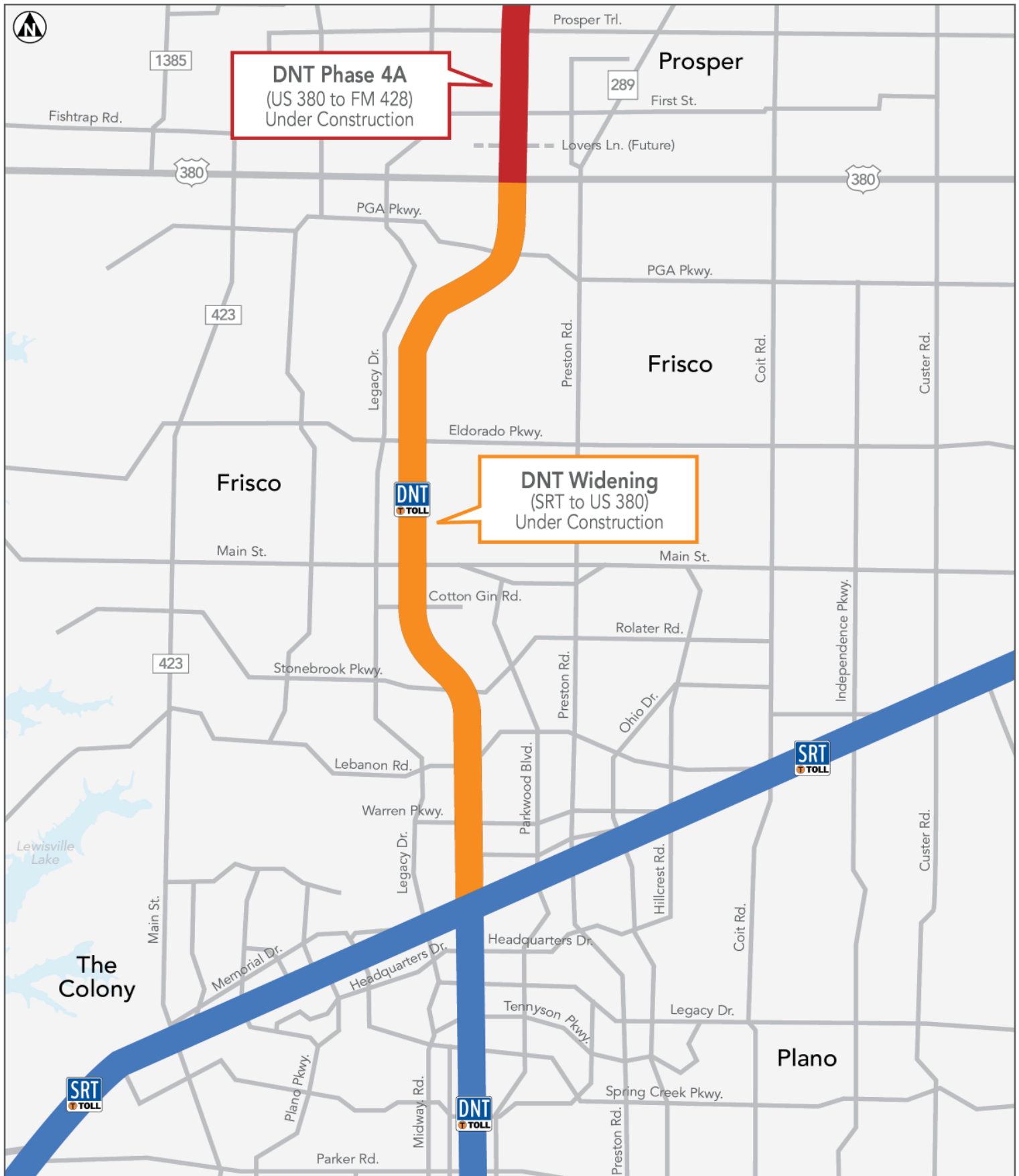
- Reconstruction of the southbound DNT bridge over Fields Pkwy. was completed, and two lanes of traffic were moved onto the new bridge on May 10. Work continues on the other two mainlanes.
- Reconstruction of the southbound Headquarters/SH 121 exit ramp was completed on May 19. The ramp was reopened to traffic.
- The southbound John Hickman Pkwy./Warren Pkwy./Gaylord Pkwy. ramp closed for reconstruction on May 20.
- Widening work continues at Gaylord Pkwy.
- Permanent barrier installation throughout the project limits.
- Installation of new signage and lighting throughout project area.

WHAT'S NEXT?

- Installation of new signage and lighting throughout project area.
- Reconstruction of the southbound John Hickman Pkwy./Warren Pkwy./Gaylord Pkwy. ramp is underway. The ramp will open in its new location in fall 2025.
- The northbound Eldorado Pkwy. and southbound Main St. exit ramps will open in their new locations this summer.
- Bridge widening work continues at the Gaylord Pkwy. bridge.
- Paving and concrete placement throughout the project limits.
- Final striping will begin this summer.

PROJECT UPDATES IN PICTURES









Hand chipping for bridge widening



Pouring concrete for bridge cap



Concrete placement



Concrete placement



Forming bridge columns



Forming steel



# Dallas North Tollway Phase 4

JUNE 2025

The Dallas North Tollway (DNT) Phase 4 project extends the road 13.7 miles north of US 380. At completion, the project will provide a direct link between downtown Dallas and the growing communities in Collin and Denton counties.

- Opening dates
- Phase 4A: fall 2027
- Phase 4B: To be determined

PROJECT SECTIONS	SCOPE	SEE PROJECT MAP
Phase 4A	US 380 to FM 428	
Phase 4B	FM 428 to Grayson County line	
Proposed Grayson County Tollway	A Grayson County Regional Mobility Authority project that may extend the toll road into Grayson County (not an NTTA project)	

## RECENT PROGRESS

- Phase 4A: Earthwork and drainage work.
- Phase 4A: Wall and wall foundation work.
- Phase 4A: Column and cap work near intersections.

## WHAT'S NEXT?

- Phase 4A: Construction of the mainlanes with wall, column, cap, and beam placements.

## PROJECT UPDATES IN PICTURES



Completed columns and caps

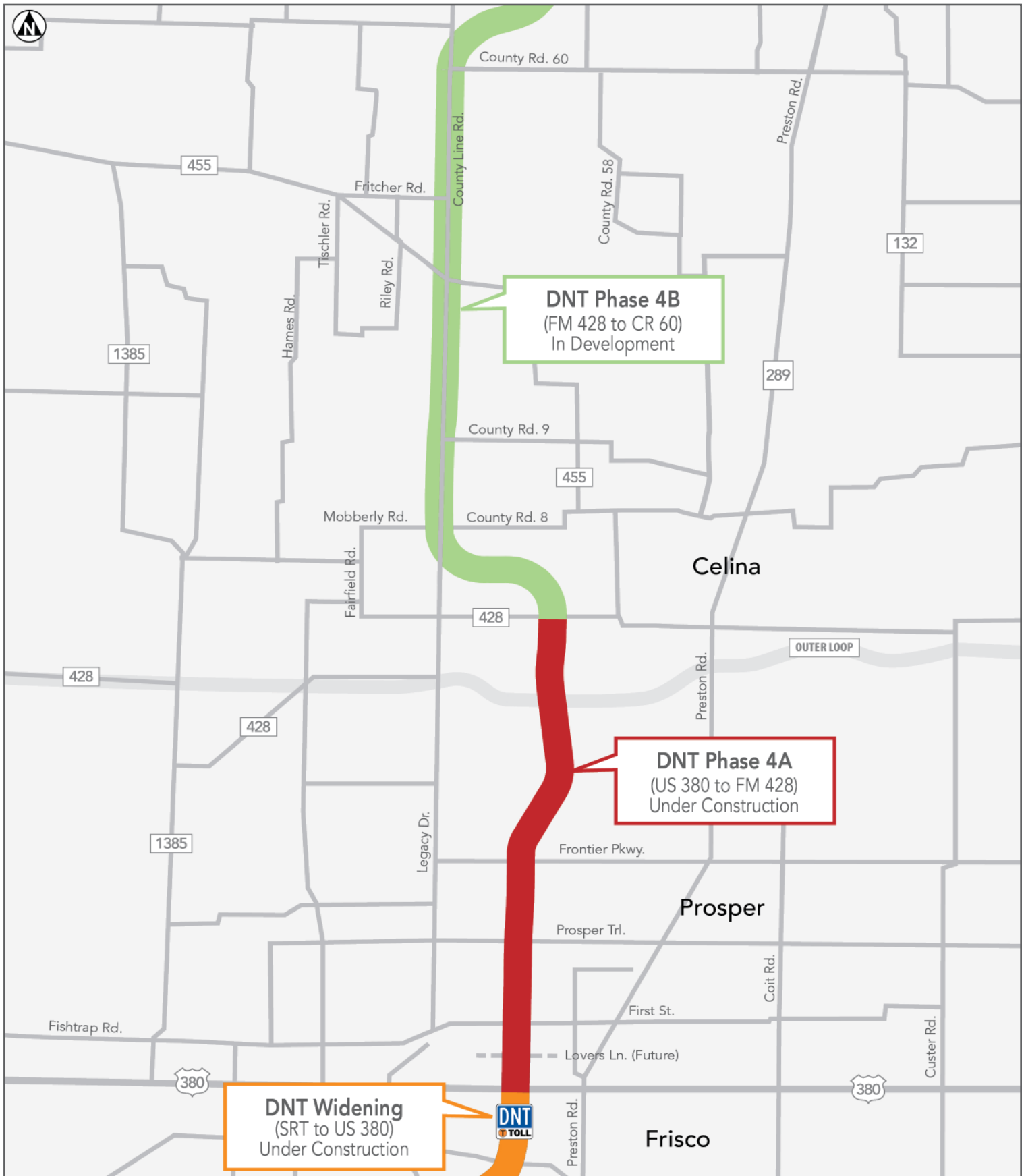


Grading work north of First St.

1







# THE DIRT

## ON DNT TO CELINA AND PROSPER

# THE DIRT

## ON DNT TO CELINA AND PROSPER

The project will require over

# 600,000

square yards of paving

That's almost as big as  
Frontier Park in Prosper and  
Old Celina Park Combined!



# THE DIRT

## ON DNT TO CELINA AND PROSPER

Columns range in size from

# 10-17'

each

Averaging at 13.5 feet tall,  
which is as long as the average  
wingspan of two American bald eagles!



# THE DIRT

## ON DNT TO CELINA AND PROSPER

The project will set over

# 100,000

linear feet of beams

That's about the distance from  
Prosper Town Square to  
Denton Town Square as the crow flies!

