

Introduction

The Texas Department of Transportation initiated the State Highway 170 corridor study, conducted preliminary studies, processed environmental reviews, obtained environmental clearance and right of way, and built the existing roadway. TxDOT is conducting further studies of the corridor. These studies, which will include a public meeting and a public hearing, will ultimately produce an approved schematic design and environmental documentation. It is anticipated that the environmental analysis will culminate in a "Finding of No Significant Impact."

Corridor Details

- The North Central Texas Council of Governments' (NCTCOG) long-range Metropolitan Transportation Plan, Mobility 2040, currently identifies the SH 170 corridor from I-35W in Tarrant County to SH 114 in Denton County ultimately as a four-lane freeway with two tolled, managed lanes.
- Project limits: I-35W to SH 114
- Project length: 5.8 miles
- Estimated project cost: To be determined
- Opening date: To be determined

Milestones

- In November 1989, TxDOT issued a "Finding of No Significant Impact" for the completion of a four-lane, controlled-access facility with six frontage road lanes from SH 114 to I-35W.
- The city of Fort Worth conducted a feasibility study in the late 1980s for the Northpass Freeway from I-35W to SH 199.
- In the early 1990s, TxDOT constructed frontage roads between I-35W and SH 114.
- Hillwood Development performed a preliminary alignment study in 2003 for the SH 170 extension from I-35W to U.S. 287 without determination of a final alignment.
- In September 2006, at the request of the NCTCOG, the Regional Transportation Council authorized NTTA to evaluate the toll feasibility of SH 170 as one of five regional toll facilities.
- In September 2007, NTTA Board of Directors authorized \$1.1 million for "project development services," which include preliminary concept design and environmental documentation for Section 1 of SH 170 from SH 114 to I-35W.
- In May 2009, the Federal Highway Administration concurred that an environmental assessment was appropriate. TxDOT staff then advanced the work plan to the Texas Transportation Commission for approval.
- In September 2009, the Texas Transportation Commission (TTC) approved the work plan.
- NTTA, in conjunction with TxDOT and the NCTCOG, hosted a work group meeting in October 2009 to discuss the work plan and next steps.

- Astakeholders' meeting on Sept. 28, 2010, in Roanoke, provided an update about the progress of the schematic design and environmental documentation.
- On Nov. 10, 2011, NTTA, in conjunction with TxDOT, conducted a public meeting in Roanoke.
- FHWA approved the environmental document as satisfactory for further processing on Nov. 20, 2014.
- A public hearing relating to the proposed improvements to SH 170 scheduled for Feb. 24, 2015 in Roanoke was postponed until further notice.
- TxDOT continues to work closely with project partners to advance this project.
- TxDOT held a public meeting for a proposed grade separated interchange on SH 170 at Parrish Lane on March 1 in Trophy Club. The estimated \$22 million project would also add main lanes from Roanoke Road to SH 114. This portion of the project was environmentally cleared on June 7, 2016, and is scheduled to let in July 2016.
- The NCTCOGs' long-range Metropolitan Transportation Plan, Mobility 2040, which was approved locally in spring 2016, identifies the SH 170 corridor from I-35W in Tarrant County to SH 114 in Denton County, ultimately as a four-lane freeway with two tolled, managed lanes.

Next Steps

- Revise schematic and environmental documentation based on Mobility 2040 project.

Project Partners

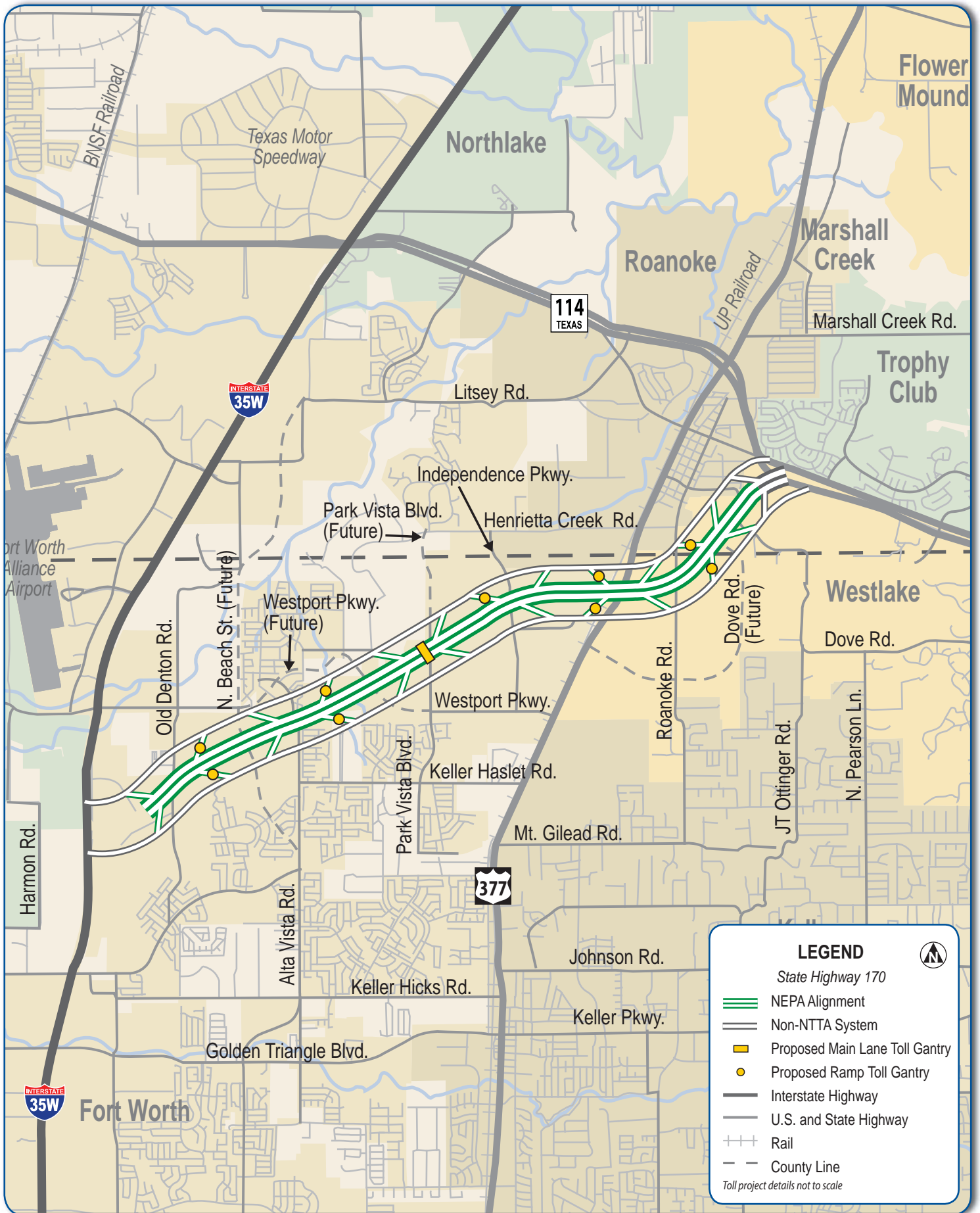
- TxDOT
- NTTA
- NCTCOG
- Denton County
- Tarrant County
- Fort Worth
- Haslet
- Roanoke
- Trophy Club
- Westlake

Corridor Contacts

TxDOT: Nazrul Chowdhury, P.E. 2501 SW Loop 820, Fort Worth, TX 76133 Nazrul.Chowdhury@txdot.gov (817) 370-6944	NTTA: F. Terry Watson, P.E., AICP 5900 W. Plano Parkway, Plano, TX 75093 SH170@ntta.org (214) 224-3062
---	---

www.ntta.org/roadsprojects/futproj/sthwy170/Pages/default.aspx





LEGEND

- State Highway 170
- NEPA Alignment
- Non-NTTA System
- Proposed Main Lane Toll Gantry
- Proposed Ramp Toll Gantry
- Interstate Highway
- U.S. and State Highway
- Rail
- County Line

Toll project details not to scale

State Highway 170 Progress Report